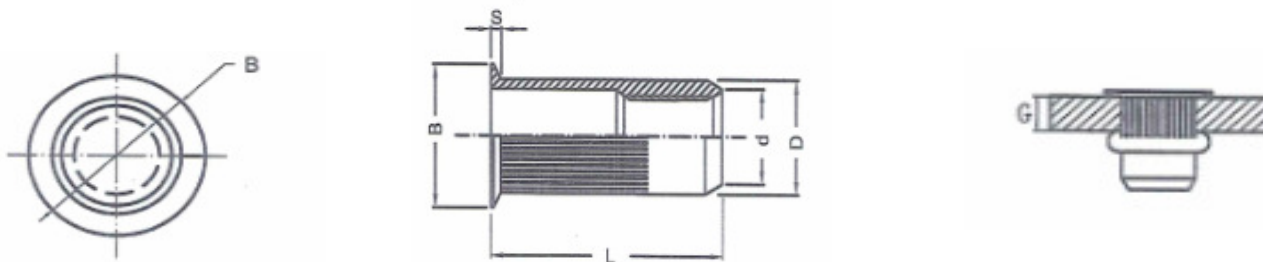


Description	Code	Material	Finish
Steel Blind Nut, Reduced Head (-A), Ribbed	M_RH-A Ribbed	Carbon Steel	Zinc Plated



Nut Code	THREAD SIZE d	NUT DIAMETER D (+/-0.2)	HEAD DIAMETER B (+/-0.3)	HEAD THICKNESS S (+/-0.15)	NUT LENGTH L (+/-0.4)	GRIP RANGE G	RECOMMENDED HOLE SIZE (+0.1/-0)	SCREW TENSILE Kgf	SCREW TORQUE Kgf.cm	BODY SHEAR Kgf
M3RH-A Ribbed	M3 X 0.5	4.7	5.6	0.35	9	0.5-1.5	4.8	500	30	160
M4RH-A Ribbed	M4 X 0.7	6.3	7.1	0.5	10.5	0.5-2.5	6.4	750	45	250
M5RH-A Ribbed	M5 X 0.8	7.1	8.1	0.6	12	0.5-3.0	7.2	1,100	100	290
M6RH-A Ribbed	M6 X 1.0	9.5	10.5	0.6	15	0.7-3.5	9.6	1,700	160	430
M8RH-A Ribbed	M8 X 1.25	10.4	11.5	0.6	16	1.0-3.5	10.5	2,600	280	530
M10RH-A Ribbed	M10 X 1.5	12.6	13.9	0.6	20	1.0-4.0	12.7	3,100	450	600

Note:
All dimensions are in millimeters.

5			SPECIAL RIVETS CORP.					
4								
3			Draw	杜秀侠	Date	12.30.16	Name	Blind Nut (Ribbed)
2			Check	何伯蒼	Date	12.30.16		
1			Approve	王慧娟	Date	12.30.16	Dwg no.	NUT-RHA-008
Rev.	Changes	Date	Unit	mm	Date		Sev.	1st version